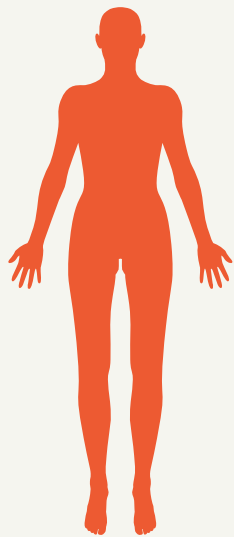


BLOOD CULTURE COLLECTION PROTOCOL



GATHER SUPPLIES FOR COLLECTION

BLOOD CULTURE KITS ARE AVAILABLE AND CONTAIN MANY NECESSARY SUPPLIES

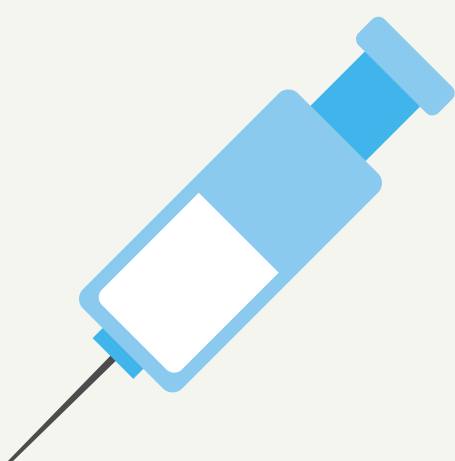
At minimum, gather blood culture bottles, CHG prep, alcohol wipes, 20 ml leur-lock syringe, transfer set, butterfly set, clean gloves and lab requisitions.



SELECT AND PREPARE VENIPUNCTURE SITE

SWAB SITE WITH ALCOHOL FOLLOWED BY CHG, ALLOWING TO DRY IN BETWEEN APPLICATIONS

Alcohol and CHG take several minutes to disinfect. Do not fan site to dry. Once disinfected, do not touch the venipuncture site, even when wearing gloves.



SELECT YOUR SITE

PERIPHERAL VENIPUNCTURE IS THE PRIMARY METHOD FOR DRAWING BLOOD CULTURES

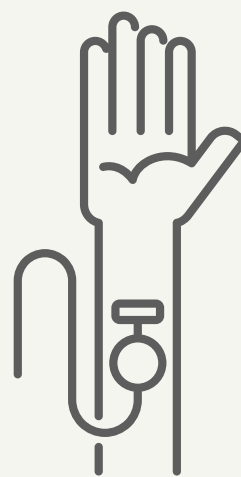
Blood cultures cannot be drawn through CVCs or established peripheral IVs due to the risk for contamination. Blood cultures may be collected from a CVC on insertion only if the sample is drawn before the sterile drape is removed.



PREPARE BLOOD CULTURE BOTTLE

REMOVE THE FLIP-OFF CAP AND SWAB SEPTUM WITH ALCOHOL

The septums are not sterile and must be cleaned prior to sample collection. Allow alcohol to dry completely and do not contaminate septum after cleaning.



COLLECT SAMPLE

PERFORM VENIPUNCTURE AND ASPIRATE SAMPLE OF APPROPRIATE VOLUME DEPENDING ON BOTTLE

One set of blood cultures means 2 bottles, one aerobic and one anaerobic. Use guides on the bottle to avoid overfilling. For both bottles, a minimum of 3 ml may be accepted, however, recovery of microorganisms may be diminished. If less than 3 ml can be aspirated, pediatric bottles may be used for both aerobic and anaerobic samples.