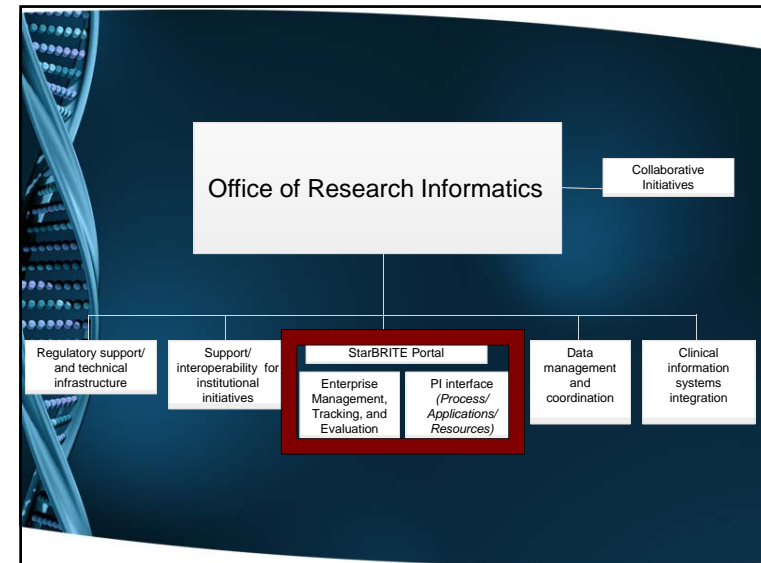


Department of
BIOMEDICAL INFORMATICS
VANDERBILT UNIVERSITY MEDICAL CENTER

Informatics Resources Supporting the Research Enterprise

Paul A. Harris, PhD
Director, Office of Research Informatics
Associate Professor, Biomedical Informatics
& Biomedical Engineering



VANDERBILT UNIVERSITY | StarBRITE

MY RESEARCH | GOVERNANCE DASHBOARD | MY PROFILE | QUICK LINKS | LOGOUT | CONTACT US | SEARCH STARBRITE

Planning & Implementation | Recruitment | Research on Practice and Policy | Funding | Data Management | Education | BioVU & SD | Basic Science

Need a tool to facilitate collaboration and sharing of documents with individuals internal and external to VU? Check out ROCKET

View more



What is StarBRITE?

StarBRITE, launched in October 2007, is an interactive system that provides one stop shopping for research needs. View the Town Hall Meeting presentation (10/23/2007) 25MB

What is VICTR?

Vanderbilt's Institute for Clinical and Translational Research (VICTR) is a virtual home for clinical and translational research and its mission is to transform the way ideas and research discoveries make their way from origin to patient care. Watch the VICTR Public Mission for 1 minute video about VICTR and the PPGC

New Items

The Center in Molecular Toxicology is soliciting pilot project applications for funding period 04/1/13 - 03/31/14

VICE: Interventional Device Prototyping Funding and Support

Try the new **Uber Module** to see the regulatory review status for your studies.

Learn about **recent funding opportunity** announcements.

Regularly Scheduled Clinics

VICTR Funding Clinics: (Monthly, 2nd Monday, July 8, August 13, September 10, October 6, November 12, December 10, 2012), 10-11am, A-3210 MCN (CRC)

VANDERBILT UNIVERSITY | StarBRITE

MY RESEARCH | GOVERNANCE DASHBOARD | MY PROFILE | QUICK LINKS | LOGOUT | CONTACT US | SEARCH STARBRITE

Planning & Implementation | Recruitment | Research on Practice and Policy | Funding | Data Management | Education | BioVU & Synthetic Derivative

REDCap

REDCap (Research Electronic Data Capture) is a secure, web-based application designed to support traditional data capture from data capture for research studies. REDCap is widely used in the biomedical research enterprise and enables a large community of...

If you have a REDCap question, please contact the REDCap support team at redcap@vanderbilt.edu

If you would like to learn more about REDCap, please visit the REDCap website at redcap.org

REDCap Online Help

Research Match

Find a research partner for your project. Search by location, discipline, and more.

Clinical Research Education Schedule

The event schedule provides a calendar of research education events offered by many Vanderbilt departments.

BioVU & Synthetic Derivative

BioVU is the Vanderbilt DNA repository of DNA extracted from discarded blood collected during routine clinical testing and stored in the Synthetic Derivative. Samples were then used for the purpose of the research and demographic data within the Synthetic Derivative creating a centralized resource for making associations between genetic information and disease susceptibility or relative drug response across populations.

Statistics

# of Adults in BioVU	117,893
# of Children in BioVU	13,653

VANDERBILT UNIVERSITY StarBRITE

Planning & Implementation Recruitment Research on Practice and Policy Funding Data Management Education BioVU & SD Basic Science

Home » Basic Science

Basic Science

Translational research often begins in the lab, with discoveries providing the foundation for patient-oriented research. Initial translation of discoveries from the bench to the bedside can be difficult for many reasons, such as the lack of familiarity with the complex regulatory requirements associated with clinical research and lack of exposure to the appropriate clinical researchers.

VCTR has developed resources aimed at reducing barriers across the translational spectrum. The following resources may be of particular interest to researchers involved in the early transition from basic discoveries to clinical research:

Studios
Any investigator (Medical/Graduate Students through Professors) may request a studio for any stage of their research from hypothesis generation, study design, implementation, analysis, grant or manuscript development. Also of particular interest may be a translation studio which would help with the transition of basic science findings to patient-oriented research. [Learn More](#)

ROCKET (Research Organization, Collaboration, and Knowledge Exchange Toolkit)
ROCKET is a web-based tool for sharing information and documents, allowing members of a workspace to collaborate more effectively and efficiently by building and sharing with others. Researchers have used ROCKET for grant and manuscript development, course collaboration, multi-institutional collaborations, and a tool to help with program management. [Learn More](#)

REDCap (Research Electronic Data Capture)
A secure, web-based application designed to support traditional case report form data capture for research studies. REDCap is widely used in the Vanderbilt research enterprise and across a large consortium of institutional partners. Examples of non-clinical projects include:

- Human Cancer Tissue Biobank
- Conditional Knockout Mouse Study

[Learn More](#)

VCTR Funding
VCTR fundable studies are clinical and translational hypothesis driven projects that involve human tissue, human information (e.g. medical records), and have application to human health. [Learn More](#)

Tools for Grant Writing
Template language, letters of support, internal reviews and expert feedback, and much more. [Learn More](#)

Tools for Manuscript Writing
A variety of resources to assist with manuscript preparation and development. [Learn More](#)

[Product Management Request](#)

Other Resources

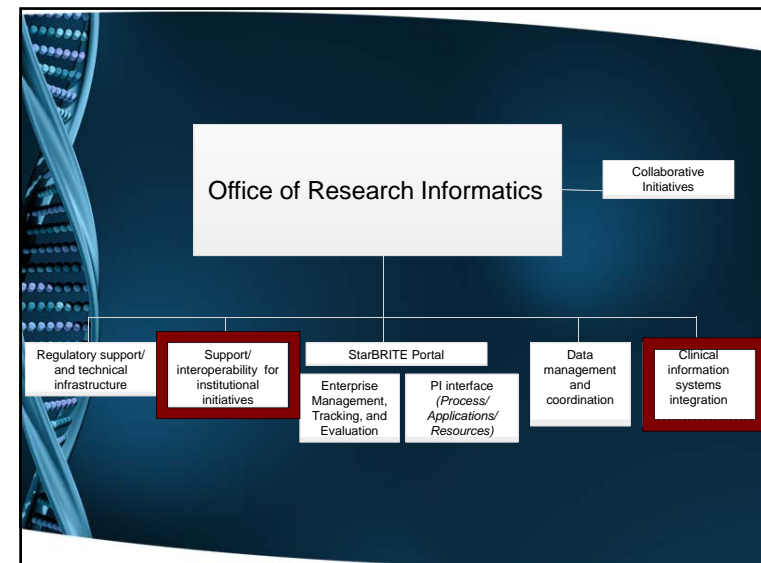
- VUMC Office of Research
- Research Core and Shared Resources
- Funding Opportunities
- Animal Care and Use Program
- Human Research Protection Program
- Vanderbilt Research A-Z

Learn about Research at Vanderbilt

- [ResearchNews@vanderbilt](#)
- [Research at VUMC](#)
- [Research at Vanderbilt University](#)
- [VanderbiltResearch.org](#)

Contact Us

Questions/Suggestions?
Research Support Services
2525 West End Ave., 8th Fl.
Nashville, TN 37203-6820
(615) 322-7343 or Email



BioVU

- Contains de-identified DNA extracted from leftover blood after clinically-indicated testing of Vanderbilt patients who have not opted out

10/25/2012

VANDERBILT UNIVERSITY StarBRITE

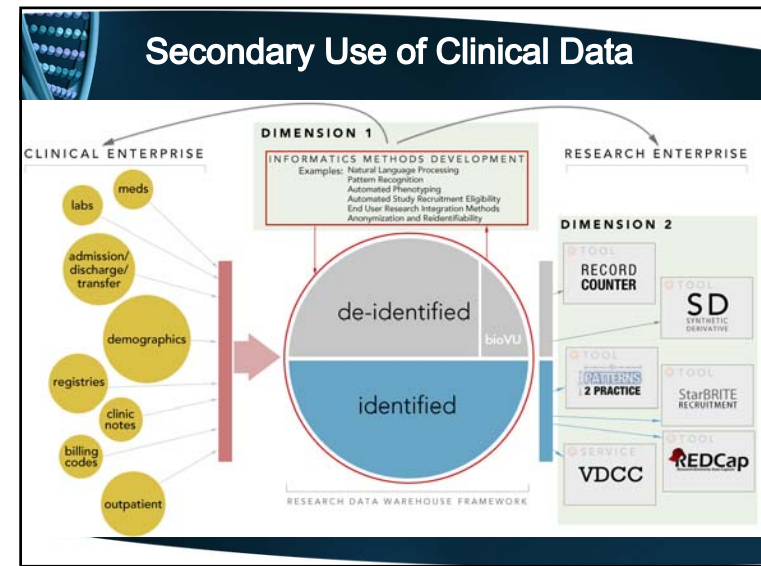
Planning & Implementation Recruitment Research on Practice and Policy Funding Data Management Education BioVU & SD

Home » BioVU & SD

BioVU & SD

BioVU is the Vanderbilt DNA biorepository of DNA extracted from discarded blood collected during routine clinical testing and linked to information in the Synthetic Derivative. Samples within BioVU can be matched with de-identified clinical and demographic data within the Synthetic Derivative creating a centralized resource for making associations between genetic information and disease susceptibility or variable drug responses across populations.

# of Adults In BioVU	136,403
# of Children In BioVU	17,339
# of Samples With GWAS Data In BioVU	8,909



REDCap
Research Electronic Data Capture

Consortium Wiki (Login Required)

Upcoming Events:


- Weekly All-Hands Consortium Meeting - Every Friday, 1-2PM Central
- 5th Annual REDCap Conference - June 24-26, 2013 (Philadelphia, PA) Hosted by The Children's Hospital of Philadelphia and University of Pennsylvania - [Official website](#) - [Register here](#)

Introduction | Software | Consortium Partners | Become a Partner | Video Resources | Citing REDCap | Library

The REDCap Consortium is composed of **585 active institutional partners** from CTSA, GCR, RCM and other institutions in 54 countries. The consortium supports a secure web application (REDCap) designed exclusively to support data capture for research studies.

The REDCap application allows users to build and manage online surveys and databases quickly and securely, and is currently in production use or development build-status for more than **63,000 projects** with over **81,000 users** spanning numerous research focus areas across the consortium. To find out if your institution is already running REDCap, you will find contact information on the [Consortium Partners](#) page. Learn more about REDCap by watching a [brief summary video \(4 min\)](#).

Map of REDCap Consortium Partners [View fullscreen map](#)



Recent publications using REDCap:

- Discordant Associations Between SLC01B1 S217TC and Plasma Levels of Ritonavir-boosted Protease Inhibitors in AIDS Clinical Trials Group Study A5146. *Ther Drug Monit.* 2013 Apr;35(2):209-216.
- Breastfeeding Initiation in the Context of a Home Intervention to Promote Better Birth Outcomes. *Breastfeed Med.* 2013 Mar 13.
- Association of amino acids with common complications of prematurity. *Pediatr. Res.* 2013 Jan.
- Effects of Eyafallajökull Volcanic Ash on Innate Immune System Responses and Bacterial Growth in Vitro. *Environ. Health Perspect.* 2013 Jan.
- Circulating interleukin-6, soluble CD14, and other inflammation biomarker levels differ between obese and non-obese HIV-infected adults on antiretroviral therapy. *AIDS Res Hum Retroviruses.* 2013 Mar 6.
- Gynecological and menarthal disorders in women with vasovagal syncope. *Clin Auton Res.* 2013 Mar 7.

[View all 529 articles](#)

CTSA Clinical & Translational Science Awards
The Clinical and Translational Science Awards (CTSA) are awarded to the benefit of patients.

MY RESEARCH | GOVERNANCE DASHBOARD | MY PROFILE | QUICK LINKS | LOGOUT | CONTACT US | SEARCH STARBRITE

VANDERBILT UNIVERSITY | **StarBRITE**

Planning & Implementation | Recruitment | Research on Practice and Policy | Funding | Data Management | Education | BioVU & SO | Basic Science

Need a tool to facilitate collaboration and sharing of documents with individuals internal and external to VU? Check out ROCKET



[View more](#)

What is StarBRITE?
StarBRITE, launched in October 2007, is an interactive system that provides one stop shopping for research needs. [View the Town Hall Meeting presentation \(10/23/2007\) 25MB](#)

What is VICTR?
Vanderbilt's Institute for Clinical and Translational Research (VICTR) is a virtual home for clinical and translational research and its mission is to transform the way ideas and research discoveries make their way from origin to patient care. [Visit the VICTR Public Website to Learn More About VICTR and the CTSA](#)

New Items

The Center in Molecular Toxicology is soliciting pilot project applications for funding period 04/1/13 - 03/31/14

ViSE: Interventional Device Prototyping Funding and Support

Try the new **Uber Module** to see the regulatory review status for your studies.

Learn about recent **funding opportunity** announcements.

Regularly Scheduled Clinics

VICTR Funding Clinics: (Monthly, 2nd Monday, July 9, August 13, September 10, October 8, November 12, December 10, 2012), 10-11am, A-3210 MCN (CRC)

Collaboration Opportunities (projects, papers, grants, teaching ...)



col·lab·o·ra·tion /kəˌləbəˈrāSHən/

Noun:

1. The action of working with someone to produce or create something.
2. Something produced or created in this way.

Collaborative Space Needs **COMMUNICATION**



col·lab·o·ra·tion /kəˌləbəˈrāSHən/

Noun:

1. The action of working with someone to produce or create something.
2. Something produced or created in this way.

Collaborative Space Needs ACCESS TO INFORMATION



col·lab·o·ra·tion /kəˌlabəˈrāSHən/ 🔊

Noun:

1. The action of working with someone to produce or create something.
2. Something produced or created in this way.

VANDERBILT UNIVERSITY MEDICAL CENTER

ROCKET

Dashboard

[MY PROJECTS](#) | [Create new workspace | search workspaces | manage logs](#)

	show tools	stats*	title*	next date	modified	label
			A trip to inner space: insights into salt balance from cosmonauts Data Site	—	01/21/2013 04:02pm	
			Annual Reports	—	09/25/2012 01:44pm	
			BMF 391 - Clinical Research Informatics Website	—	03/14/2013 04:28pm	
			BMF 391 Final Website	—		
			C4 Test Bioinformatics Service		06/13/2012	
			Center for Personalized S...			
			Chemical Workshop			
			CORI Plans and Portfolio			
			GSA-Central Redesign			

* last 7 days

VANDERBILT UNIVERSITY MEDICAL CENTER StarBRITE

CONTROLLED ACCESS ZONE

Presentation Materials - Oct 03, 2012

Clinical Research Informatics (12:00 - 12:00)

Title: Trip to Inner Space: Insights into Salt Balance from Cosmonauts
 Date: 10/03/2012 11:57 PM
 Size: 100KB
 Type: pptx

Planning a Data Collection Strategy (14:00 - 14:00)

Title: Planning a Data Collection Strategy
 Date: 10/03/2012 11:24 AM
 Size: 100KB
 Type: pptx

Electronic Data Capture (15:00 - 17:00)

Title: EDC Training
 Date: 10/03/2012 11:30 AM
 Size: 100KB
 Type: pptx

Return to Dashboard

Chemical Workshop Program

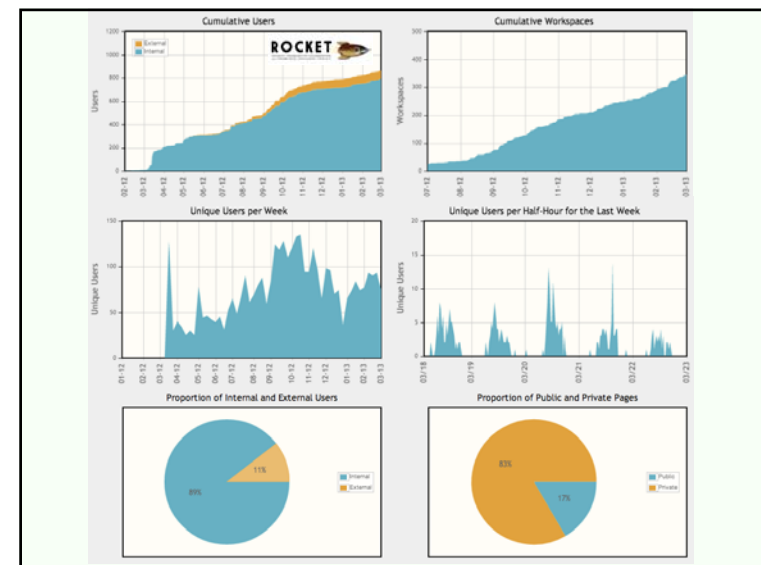
Chemical Workshop Overview
 Presentation Slides - Oct 03, 2012
 Presentation Slides - Oct 03, 2012
 Presentation Slides - Oct 03, 2012
 Workshop Logos - October 2012

Tools

[Data Tools](#) [Resources](#)

[Provide Feedback](#) [Report a Bug](#)

Powered by

[illegible]



paul.harris@vanderbilt.edu

VANDERBILT  UNIVERSITY